

# L-VIT 2500

## High Speed Camera



Record when it happens!  
Never be too late!



### Superior image quality

1920 x 1080 Full HD resolution at up to 2500 fps L-VIT delivers crisp clear images.



**Non volatile 64GB flash memory**  
Imminent backup of recording data to flash memory.  
Never lose image data.



### Built-in g-shock sensor

Built in g-sensor for direct in camera triggering.  
Levels adjustable by software



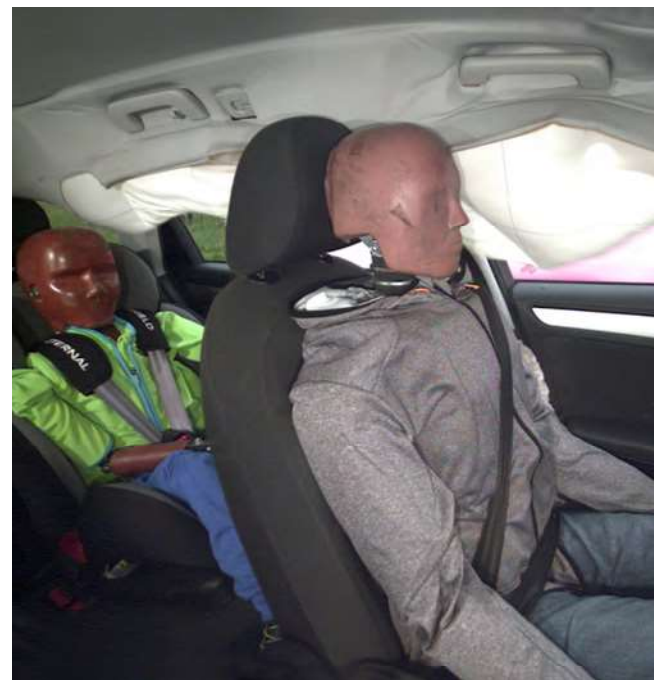
### Extensions

Extensions such as CFast Flash Disk or HDMI output on camera are available.

## L-VIT 2500 - the rugged, ultra-compact high speed camera

- **Hi-G-rated for up to 200g, Full HD @ 2500 fps, ready to be used in the most severe environments.**
- **A robust high resolution camera for demanding applications in research and development.**

The L-VIT is particularly suited for all applications where a compact, portable, high resolution and robust camera is essential. The highly light-sensitive sensor covers the most ambitious application. The L-VIT is designed and certified to withstand G-forces in excess of 150g/10ms all axes and spikes of up to 200g without CFast option. Offering a wide range of signals for external control or feedback on camera status during tests, the L-VIT is a genuine all-in-one camera. Built-in non volatile 64GB flash memory automatically saves a copy of each live recording for data redundancy, this is crucial for critical tests that cannot be repeated. To round it all up, the comprehensive Imaging Studio software allows easy piloting from PC, laptop or tablet PC.



## AOS Technologies AG

Taefernstrasse 20 | CH-5405 Baden-Daettwil

Tel. +41 (0)56 483 34 88

@AOSHIGHSPEEDCAM

info@aostechnologies.com

www.aostechnologies.com

# L-VIT 2500 | Key Specifications

## Typical frame rates vs resolution

1920	1080	2500 fps
1920	800	3360 fps
1920	720	3740 fps
1920	536	5000 fps
1920	260	10'100 fps

Maximum speed 195'600 fps, within limitations of sensor

## Recording time

Memory Size	4 GB	8 GB	16 GB
1920 x1080 @ 1000 fps	2 sec	4 sec	8 sec

## Optical/Sensor specifications

Image Sensor	CMOS sensor
Pixel Size	10 microns
Sensor Format	4/3" 19.20 x 10.80 mm
Light Sensitivity	ISO 8000 (monochrome), ISO 6000 (color) without gain
Gain	3 gain settings available, adjustable by software
Dynamic Range	Mono 10 Bit / Color 30 Bit
Shutter Type	Global, independent of frame rate
Exposure Time	Free adjustable from 1 µsec to 1 / framing rate by software
Lens Mount	C-Mount or optional EF/ F-Mount

## Software and camera operation

Live Video	Live video out via Ethernet or when installed HDMI
Buffer Type	Circular buffer, parametrized by software
Number of Buffers	Up to 100 buffers, individually configurable by software
Trigger Modes	Pre-post recording, adjustable in steps of 1 frame, rising falling edge, delayed trigger, trigger debouncing Shock trigger (high g trigger)
Auto Exposure	Auto exposure for automatic brightness control
Auto Download	Auto download to PC or CFast card (CFast card optional)
Flash Backup	Automatic store of video data after trigger to flash memory.
Export Formats	Export in all popular movie and single image formats supported
Control SW	AOS Imaging Studio v4 for parametrization, recording, editing and exporting/converting of recordings included

## Data interface

Data	Gigabit Ethernet RJ45 lockable
I/O	Solid 14 pin LEMO connector, compatible with all AOS camera series
I/O Tolerance	TTL compatible I/O, up to 24 V tolerant
Trigger In	Input for start stop recording, falling edge, switch closure
Armed Out	Armed out to indicate camera status ready for recording
Triggered Out	Indicates that trigger is received and camera finishes recording
Remote On	For remote switch on of camera
Sync In/Out	Sync in/out on camera
Strobe	Strobe out for synchronization of LED illumination
IRIG-B	IRIG-B 122 input for frame synchronisation and time stamping
Power Requirements	10...36 V /30 Watts
Analog inputs	Two analog inputs for recording status signals synchronized to recording

## Your local AOS partner:

## Options and add-on

Camera Memory	4 GB, 8 GB or 16 GB
Battery	Rechargeable battery for up to 12 mins operation lasting long enough to dump 16GB data to flash memory when power is not available
Video Out	HDMI video out on camera
Non-volatile Memory	Removable CFast interface with auto download functionality
ChillBox	For longer offboard use without passive cooling via metal surface use the camera mounted in the ChillBox
C-F-Mount Adapter	For F-Mount lenses, with dial for F-stop
C-EF-Mount Adapter	For EF-Mount lenses, remote control of Focus and aperture
Single Connector Interface	Single push-pull interface according German «Arbeitskreis»

## Physical specifications

Size & Weight	width: 75 mm / height: 75 mm / length: 75 mm / 910 gr width: 2.95" / height: 2.95" / length: 2.95" / 1.4 lb
Operating Temperature	-10 ... +45 °C / +14 ... +113 °F
Storage Temperature	-40 ... +70 °C / -40 ... +158 °F
Shock Resistance	200g / 11msec all axis for configuration without CFast interface 150g / 11msec all axis, spikes up to 200g according EN 60068-2-27:2009 with CFast interface
I/O Connector	LEMO type ref. FGG.2B.314.CLAD72Z (cable type)
CE	In compliance with relevant standards
Mounting	¼" UNC thread, bottom / M6 mounting threads on 4 sides

## System configuration and optional extensions

Model/Extension	L-VIT 2500	L-VIT 2500 with battery	L-VIT 2500 with CFast/HDMI output
Battery Time	No backup battery	12 min	12 min
Size	75 x 75 x 75 mm	75 x 75 x 107 mm	75 x 75 x 124 mm



Please check technical camera manual for detailed information



Specifications are subject to change without prior notice – v01.2022