



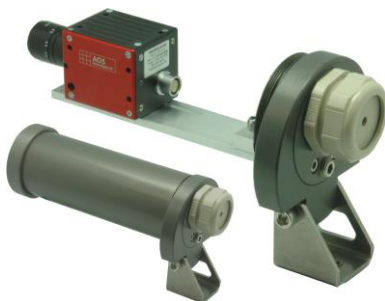
## AOS Wireless Remote Streaming Controller

For applications where high speed streaming under harsh environments is required, AOS now provides a wireless remote streaming controller. The fanless IP65 rated controller houses a high performance CPU and a SSD drive to store the streaming data. A PROMON 501 camera is connected to the controller via a single cable.

The wireless remote streaming controller is accessed via WLAN connection from your Android tablet or iPad. The tablet has full control over the camera and can setup the recording. Sequences can be downloaded from the controller to an external hard drive via USB 3.0 or Gigabit Ethernet.

One single supply does power the controller, the camera and an LED light.

- High performance i7 CPU
- IP65, IP67 possible
- Fanless
- SSD drive – no moving parts
- Power for light
- Data download via WLAN, USB 3.0 or Gigabit Ethernet
- Trigger input



Environmental housing for PROMON 501 camera (optional)



PROMON 501  
camera

*only one power supply*

LED light

### Controller Connections

3x USB 3.0

1x Gigabit Ethernet RJ45

1x Camera connector LEMO IP68

1x Trigger

1x Illumination output 24V (Max 45W)

1x 24V Power-IN

2x Wireless Antennas



### Operation options

Wireless control via Tablet-PC (IOS or Android based)



Conventional control via Keyboard, Mouse and Monitor



Standalone system (auto re-arm after trigger)



Your local AOS partner:

